

ClimateSmart™: Business Savvy

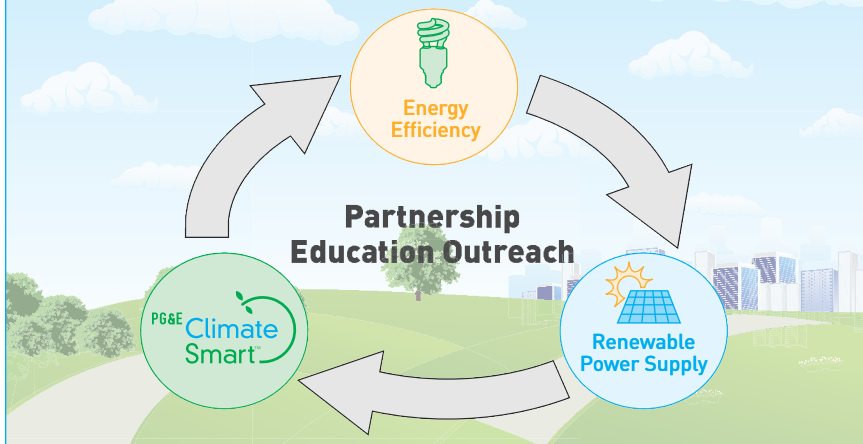


The energy that powers our businesses every day emits greenhouse gases (GHG) into the atmosphere, fueling climate change. The ClimateSmart™ program is a simple, voluntary and charitable way to balance out these GHG emissions through environmental conservation, restoration and protection projects. Pacific Gas and Electric Company (PG&E) is proud to have been the first business to participate in the program, committing to offset the emissions from all PG&E-owned buildings' energy use. The ClimateSmart program is an easy way to make a statement that your company is taking a leadership role in environmentally responsible business practices. Join in the effort today and demonstrate your business' commitment toward a cleaner planet.

“Many small business owners in Northern California care deeply about stopping global warming, but don't have the time to research the many programs available to help. The ClimateSmart program is a valuable investment. This groundbreaking program allows small businesses to make the right decision the first time.”

Hank Ryan
Executive Director
Small Business California

The ClimateSmart program is a part of a portfolio of environmental solutions offered by PG&E



VISIT THE
ClimateSmart™
WEBSITE TO
LEARN MORE
AND TO SIGN-UP
DIRECTLY ONLINE



www.joinclimatesmart.com

ALL FIELDS ARE REQUIRED

BUSINESS NAME

NAME ON PG&E ACCOUNT

First

Last

EMAIL ADDRESS

PHONE NUMBER

PG&E SERVICE ACCOUNT NUMBER(S)

PG&E SERVICE ACCOUNT ADDRESS(ES)

CITY

STATE

CA

ZIP

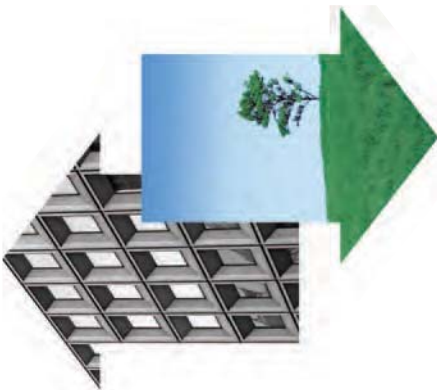
Please detach, fold, moisten and seal

Place
Stamp
Here

Pacific Gas and Electric Company
Attn: ClimateSmart
Mail Code: B8L
P.O. Box 770000
San Francisco, CA 94177-0001



JOIN THE ClimateSmart™ PROGRAM
www.joinclimatesmart.com



Benefits of the ClimateSmart™ program

According to a 2007 PG&E/Kelton Research study, 71% of consumers believe it should be a priority for companies across America to do what they can to address climate change.

At PG&E, we're committed to helping our customers reduce greenhouse gas (GHG) emissions by providing our customers with some of the cleanest energy in the nation. Even so, GHG emissions are still generated as a result of our energy use. Participating in the ClimateSmart program is a simple way to show leadership that your company is taking an important step towards a cleaner future.

- Customers are increasingly aware of climate change; actions taken by companies can have significant value for customers.
- Environmental responsibility can help boost workplace morale. Employees can tell their families and friends that their company does the right thing when it comes to climate change—and they can join in by becoming a ClimateSmart participant at home.
- 100% of all contributions are invested in independently verified GHG-emission reduction projects.
- Strict program requirements mean ClimateSmart contributions are recognized as tax deductible by the IRS.
- LEED credit may be available for ClimateSmart participants—for more details, contact PG&E.
- By signing up, you can receive ClimateSmart merchandising so your business can display its commitment to fighting climate change.

ClimateSmart contribution rates*

Your program contribution is based on your company's actual gas and electricity usage each month, allowing your energy use to be carbon neutral. Use the rates below and a recent PG&E bill to estimate what your monthly contribution might be. See the table below for approximate rates according to sample KWH and THERM.

- **ELECTRIC—\$0.00254/KWH**
- **GAS—\$0.06528/THERM**

Electricity (kWh)	0-500	501-5,000	5,001-10,000
	\$1.50 or less per month	\$13 or less per month	\$26 or less per month
Gas (therms)	0-50	51-500	501-1,000
	\$3.50 or less per month	\$33 or less per month	\$66 or less per month

*Rates are guaranteed through a minimum of 2009.

To make participating customers carbon neutral, PG&E may enter into greenhouse gas emission reduction contracts where the reductions occur over time into the future. The ClimateSmart program is being funded by PG&E customers in accordance with a decision of the California Public Utilities Commission. "PG&E" refers to Pacific Gas and Electric Company, a subsidiary of PG&E Corporation.